

USER GUIDE

EMS ANALYSER VER 1.0



REVA
The electriCity Car

Contents

Welcome to EMS Analyser!	2
System requirements	3
Supported operating system.....	3
Unsupported operating system.....	4
Minimum software and hardware requirements.....	4
Setup for EMS Analyser 1.0	5
Installation of .NET frame 2.0.....	6
Installation of Windows Installer 3.1.....	6
Installation of EMS Analyser 1.0.....	7
Setup of USB-serial controller	9
Installation of USB-serial software.....	9
USB-serial com selection and setup.....	11
Serial RS232 cable configuration	14
Setup of EMS Analyser (Upgrade software)	15
Start using your Analyser tool	16
Setup options.....	16
Connecting to EMS.....	17
Monitor system(Idle, Drive & Charge).....	18
Calibration (read & write).....	21
Vehicle information (read & write).....	22
Summary and error(read & analyse).....	23
Extra settings (reset service light, start equalisation, set soc, clear summary / error log).....	25
Trouble shooting	28

Welcome to EMS Analyser!

Get ready to experience the new EMS data down load and analysis tool. Setting up EMS analyser is easy. After you complete the setup wizard, take some time to explore the features on this tool. This guide provides tips and instructions to help you learn the basics quickly.

This tool enables you to work on DC and AC Drive cars.

System requirements

To ensure adequate performance, EMS Analyzer 1.0 has the following minimum and recommended system requirements.

Supported Operating Systems:

Scenario	Target platforms
x32-bit based systems	Microsoft® Windows® 98 Windows 98 Second Edition Microsoft Windows 2000 Professional with SP4 Windows 2000 Server with SP4 Windows 2000 Advanced Server with SP4 Windows 2000 Datacenter Server with SP4 Microsoft Windows XP Professional with SP2 Windows XP Home Edition with SP2 Windows XP Media Center Edition 2002 with SP2 Windows XP Media Center Edition 2004 with SP2 Windows XP Media Center Edition 2005 Windows XP Tablet PC Edition with SP2 Windows XP Starter Edition Microsoft Windows Millennium Edition Microsoft Windows Server™ 2003 Standard Edition Windows Server 2003 Enterprise Edition Windows Server 2003 Datacenter Edition Windows Server 2003 Web Edition Windows Server 2003 R2, Standard Edition Windows Server 2003 R2, Enterprise Edition Windows Server 2003 R2, Datacenter Edition
x64-bit based systems	Windows XP Professional x64 Edition Windows Server 2003, Standard x64 Edition Windows Server 2003, Enterprise x64 Edition Windows Server 2003, Datacenter x64 Edition Windows Server 2003 R2, Standard x64 Edition Windows Server 2003 R2, Enterprise x64 Edition Windows Server 2003 R2, Datacenter x64 Edition
Itanium-based systems	Windows Server 2003 with SP1, Enterprise Edition for Itanium-based Systems Windows Server 2003 with SP1, Datacenter Edition for Itanium-based Systems Windows Server 2003 R2, Enterprise Edition for Itanium-based Systems Windows Server 2003 R2, Datacenter Edition for Itanium-based Systems
.NET Compact Framework	Microsoft Windows Mobile™ for Pocket PC Windows Mobile for Smartphone Microsoft Windows CE

System requirements

Unsupported Operating Systems:

The EMS Analyzer 1.0 cannot be installed on the following operating systems.

Scenario	Operating system
All platforms	Microsoft Windows 95 Microsoft Windows NT® Server Windows NT Workstation Windows Server 2003, Enterprise Edition for Itanium-based Systems Windows Server 2003, Datacenter Edition for Itanium-based Systems

Minimum Software and Hardware Requirements:

Minimum Software

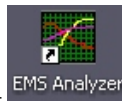
1. Microsoft Internet Explorer 6.0 with Service Pack 1.
2. Microsoft Data Access Components (MDAC) 2.8 for data access applications.
3. Windows Installer version 3.0.
4. MS-Excel 2003

Minimum Hardware

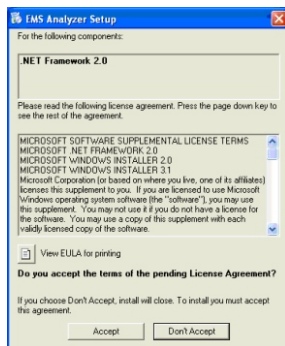
1. Processor - 600 MHz
2. RAM – 128 MB
3. Hard Disk Space – 280 MB for 32-bit and 610 MB for 64-bit

Setup for EMS Analyser 1.0

1. Before you get started, make sure for all system requirements.
2. Now simply insert EMS Analyzer 1.0 CD into the computer.
3. Follow the Windows Installer and it will install the EMS Analyzer 1.0

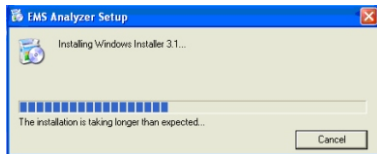
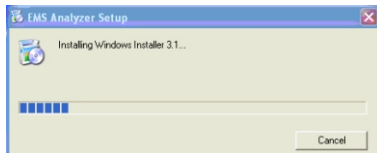
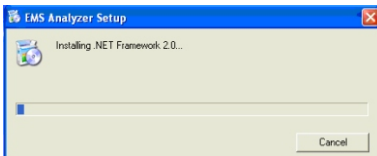
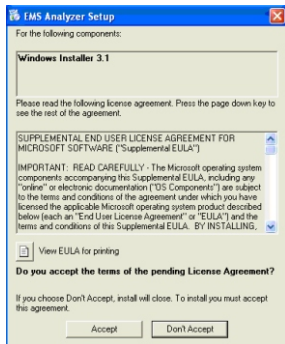


4. Installation can be confirmed with the shortcut at desktop and the folder 'EMS Analyzer' at Programs menu.
5. Net frame 2.0 starts installing, Select Accept



Setup for EMS Analyser 1.0

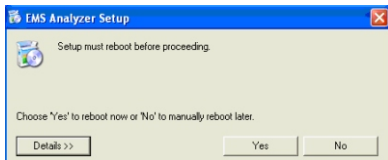
6. Windows installer starts installing, Select Accept



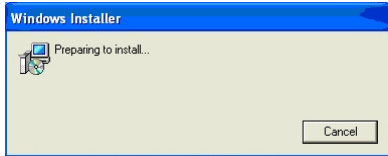
Please wait....

Setup for EMS Analyser 1.0

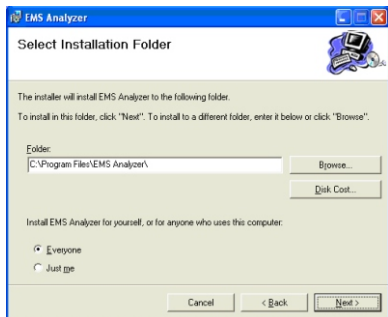
7. Setup must reboot before installing, Select Yes



8. System will restart and prepares to install EMS Analyser 1.0



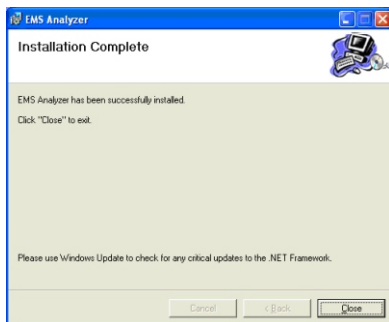
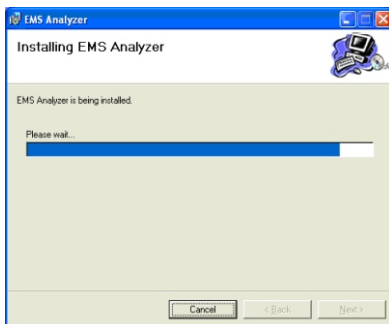
9. Refer to option Everyone and select Next



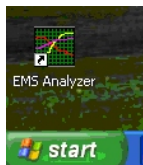
10. On confirm installation dialogue box, select Next

Setup for EMS Analyser 1.0

11. Installation complete dialogue box will appear, select close



12. Look for the below icon for complete installation



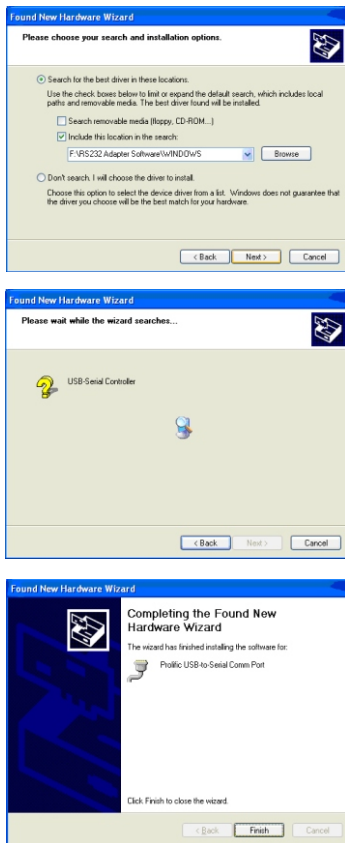
Setup for USB-serial controller

1. Insert the USB-serial controller into the available computer USB slot and wait for the below dialogue box to appear.



2. Select install from a list or specific location (Advanced)

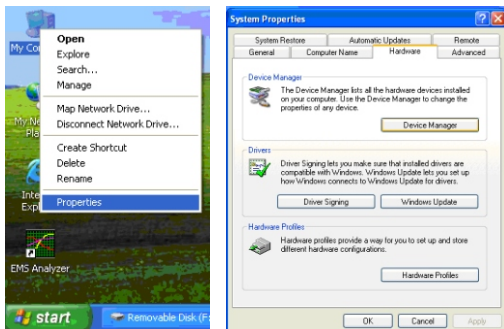
Setup for EMS Analyser 1.0



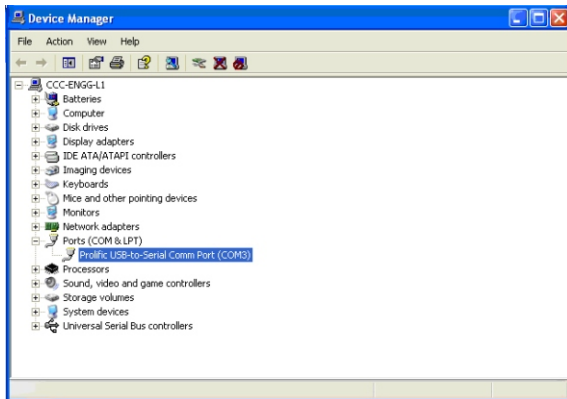
3. Click finish to close the installation wizard. The USB-serial device is Ready to use

Setup for USB-serial controller

USB-serial com selection and setup

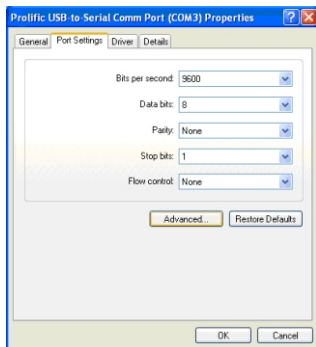
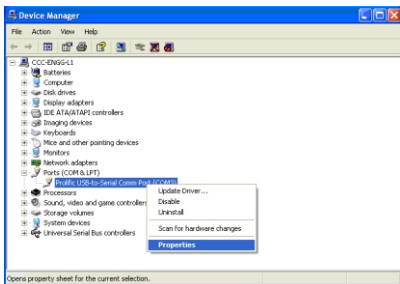


1. Select “My computer” and right click for properties
2. Select Hardware and device manager

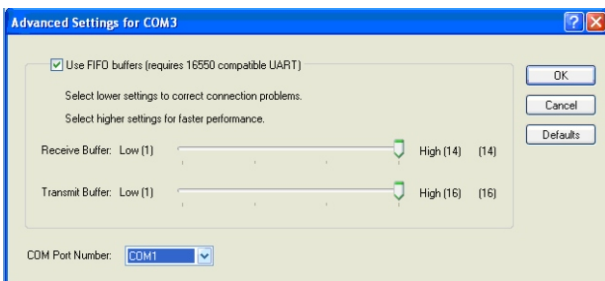


3. Select ports and right click and then select properties

Setup for EMS Analyser 1.0

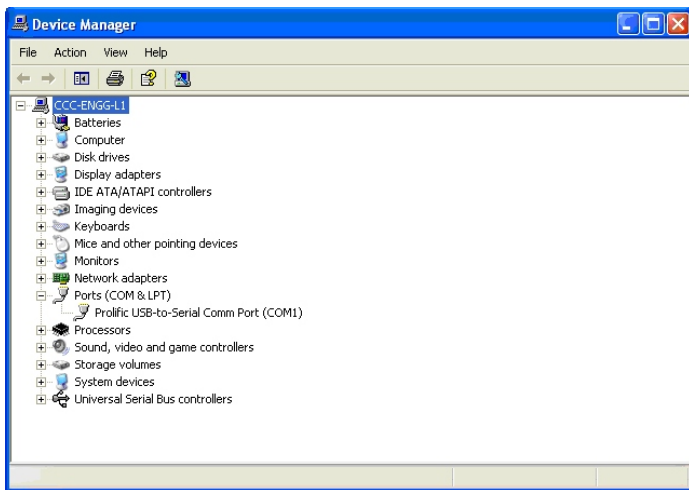


4. Select port settings and “Advanced” and click OK



5. Select COM port number to “COM1”

Setup for USB-serial controller



6. Selected COM1 will be default com when ever you connect the USB-serial controller

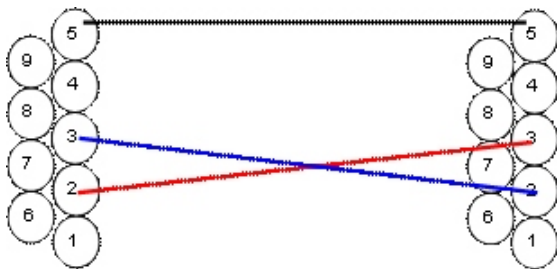
Serial RS232 cable configuration

The cable required will have 9 pin RS232 type and the connection of wires inside will be as shown below

Pin2 - Transfer

Pin3 - Receive

Pin5- Ground

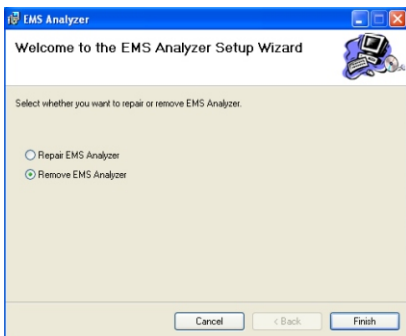


NOTE: In case the cable is cut or damaged the communication will not happen

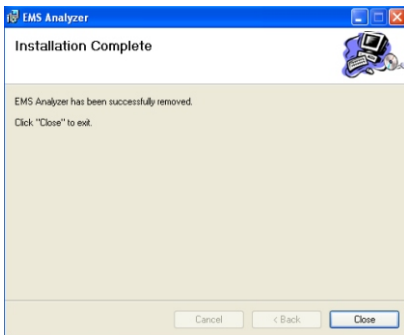
Setup of EMS Analyser (Upgrade software)

This will be used only when there is a revision of the software is released.

Reva will be sending the “EMS Analyzer (Setup).msi” file for removing old version and installing new version



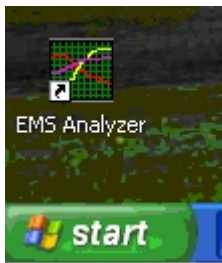
Select “Remove EMS Analyser” and click Finish



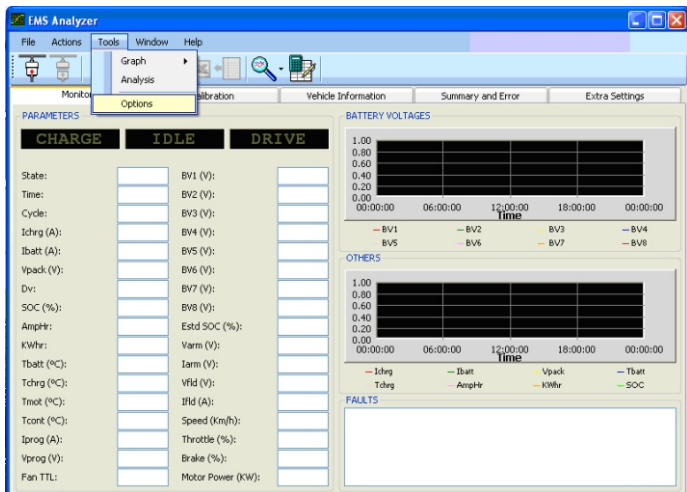
This removes the installation successfully.
Install the new setup file sent to you.

Start using your Analyser tool

Setup options

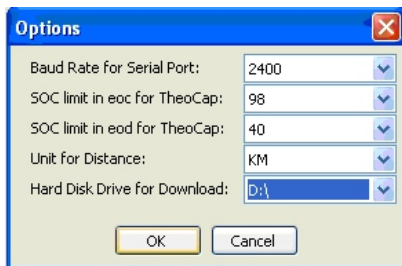


1. Double click the EMS Analyzer icon to open the tool



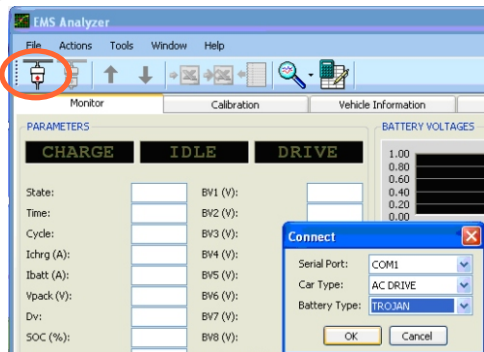
2. Set the options before you begin the data downloading

Start using your Analyser tool



3. Set baud rate to 2400
4. Select Unit of distance
5. Select hard disk drive for downloading data (default)

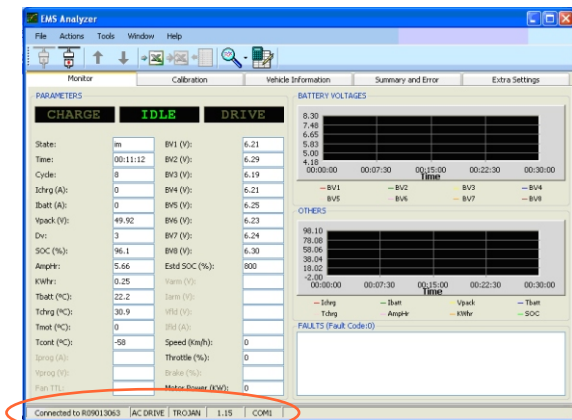
Connecting to EMS



6. Click Connect button and a dialogue box will appear
7. Select Serial port, Car type and Battery type and click OK

Start using your Analyser tool

Monitor system [Idle]



1. This is idle mode data and highlighted in red show status of system connectivity



Connect



Disconnect



Read



Write



Download & Stop



Upload



Zoom Graph

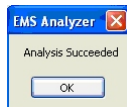
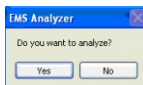
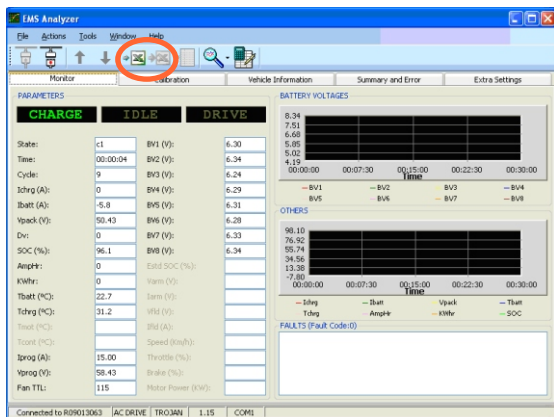


Analysis

Note: Default password – “**engineer**”

Start using your Analyser tool

Monitor system [Charge]



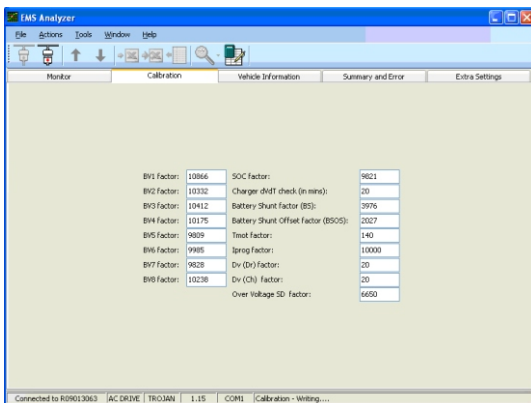
Microsoft Excel - R09013063 290109 09:47:58 Ch																											
File Edit View Insert Format Tools Data Window Help																											
Type a question for help																											
A2 C1 Coric Sans MS 7 - B U I L W X Y Z % & # \$																											

1. This is charge mode data and to log the charge data you need to select the download button. The data starts to download in default drive automatically. Once you select stop button it asks for Analysis of the downloaded data.

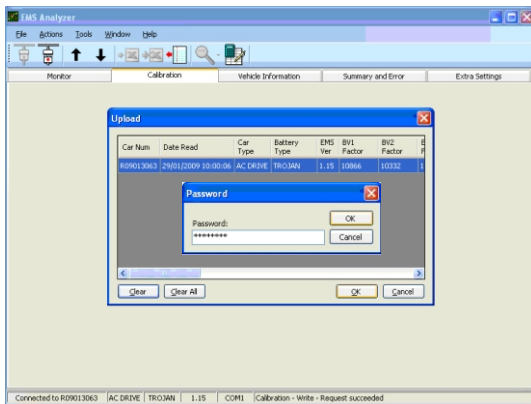
2. Select YES and the data analysis will be completed.

Start using your Analyser tool

Calibration [Read & Write]

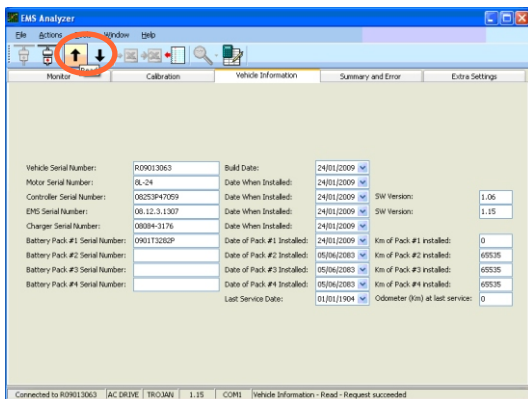


1. This is calibration mode, you can read and write calibration from this Page

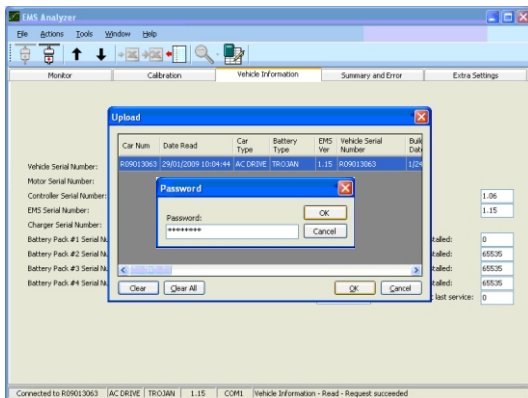


Start using your Analyser tool

Vehicle information [Read & Write]

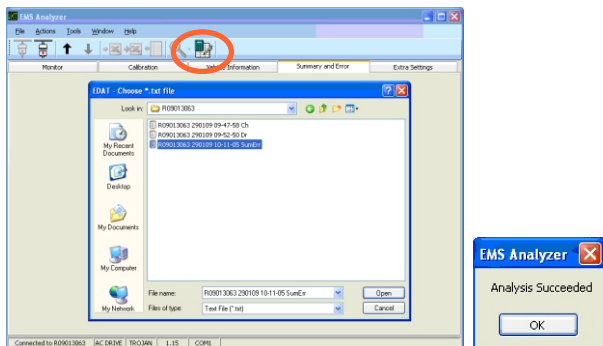


1. This is vehicle information mode, you can read and write calibration from this page

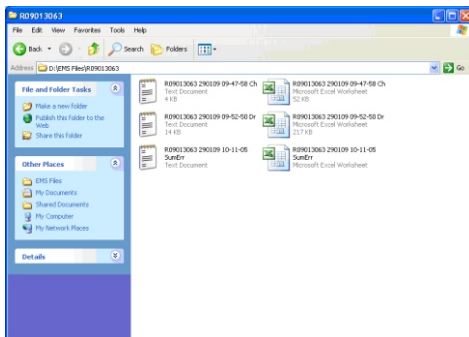


Start using your Analyser tool

Summary & Error [Read & Analyse]



1. This feature is used to analyse the data which is already downloaded by this tool and not analysed.



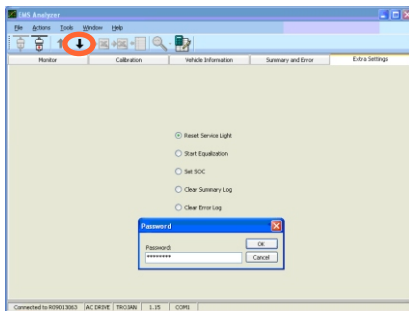
2. All the data will be stored in default drive selected during installation

Start using your Analyser tool

Extra Settings

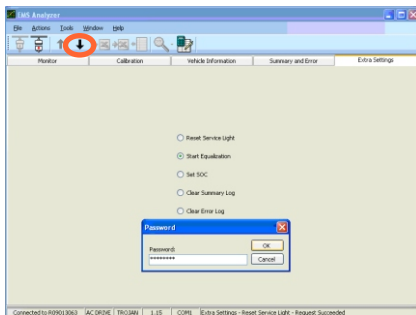
1. Reset Service light

The Service light can be reset by clicking the “write” button on tool bar. Password should be entered to submit the command



2. Start equalization

The equalization command can be given by clicking the “write” button on tool bar.

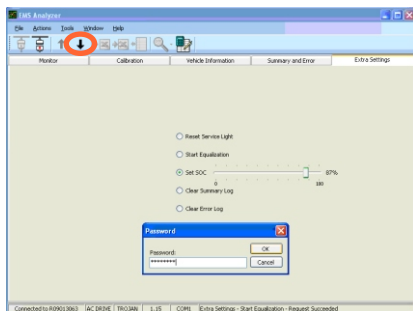


Start using your Analyser tool

Extra Settings

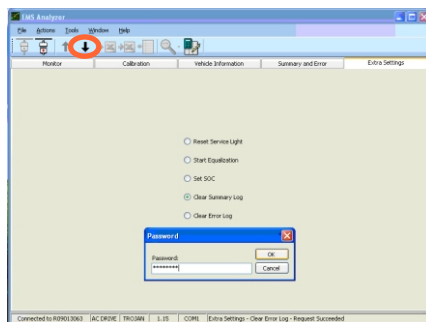
3. Set SOC level

The State of charge level can be set by selecting the slide bar to the desired SOC level



4. Clear summary data

The Summary data can be cleared by using this command

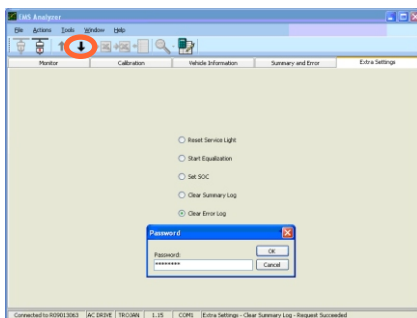


Start using your Analyser tool

Extra Settings

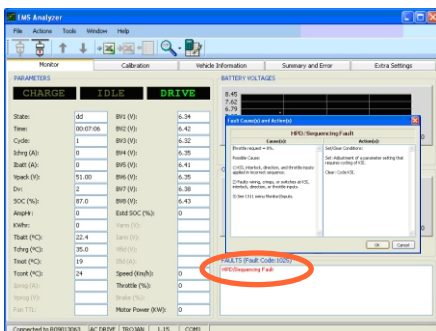
5. Clear error data

The error data can be cleared by using this command



Online Faults

Double click the fault to know the Cause and Action of the fault



Start using your Analyser tool

Trouble shooting

When i insert the CD it is not Autorun

Try performing the following actions

- ☞ Try installing manually by selecting setup.exe

I cannot read data on the monitor mode even after connecting

Try performing the following actions

- ☞ Verify that the RS232 cable is connected to computer and EMS
- ☞ Verify that the com port selected is working properly
- ☞ Verify that the USB controller is working properly
- ☞ Verify that the baud rate setting is 2400

I cannot write information to EMS

Try performing the following actions

- ☞ Verify that you are using correct password “engineer”
- ☞ Verify that the RS232 cable is working properly and no damages

I cannot load the Analyser software to my computer

Try performing the following actions

- ☞ Verify that your system requirements are meeting the specifications (Refer page3)

I am unable to run macro automatically after downloading

Try performing the following actions

- ☞ Verify that your system is installed with Microsoft office 2003
- ☞ Verify that the Macro security level is set to Medium in Excel (Go to Tools, Macro, Security and set to medium and save)

Start using your Analyser tool

Trouble shooting

I have Office2007 and unable to run a macro

Try performing the following actions

☞ The CD provided to you has Office 2003 version software and can be installed on your system. During installation you can select only Excel so that Excel 2003 only will be installed.

☞ You can still have Office 2007 on your system and work with Excel 2003.

☞ You need to install Excel 2007 compatibility version to convert 2007 files in 2003 (provided in the installation CD)

New problems encountered other than these

☞ Please contact for further assistance with errors displayed on your screen to vinay@reva-ev.com

REVA

The electriCity Car

**No. 122E, Bommasandra Industrial Area
Bangalore-560099**

Tel: +918027834437, Fax: +918027834436

Web: www.revaindia.com